

EDP Foundation Energy Heritage
Collection

STORYTELLING METERS

Curator: Joaquim Moreno

kids folio



FAMILY ACTIVITIES
Average duration 60 ⌚
Ages: +5



fundação *edp* **maat**



Welcome to the Central Tejo Power Station, a building that produced the electricity that served our homes and the streets of Lisbon for decades.

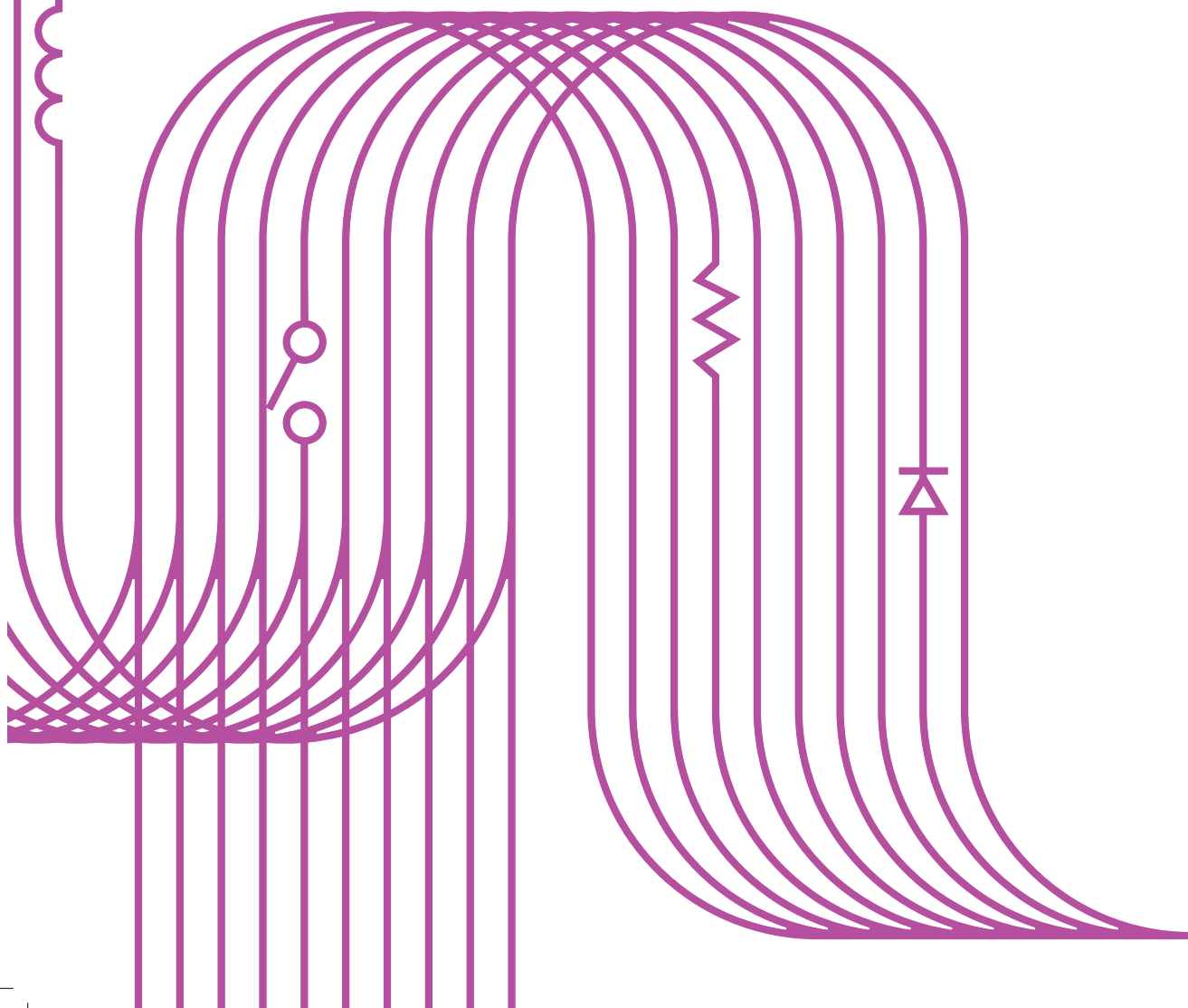
From the moment of its production to its use in our home, electricity goes through many circuits and its transmission requires many instruments, but there is one element in particular which defines its arrival into our family life: the electricity meter.

Through the lens of the electricity meters we all have at home, the exhibition STORYTELLING METERS examines many curious episodes that help us understand the great journey of electricity.

Come and find out the stories of these energy-filled episodes.

maat Education and Public Programmes

Coordination Joana Simões Henriques | Concept Fabrícia Valente

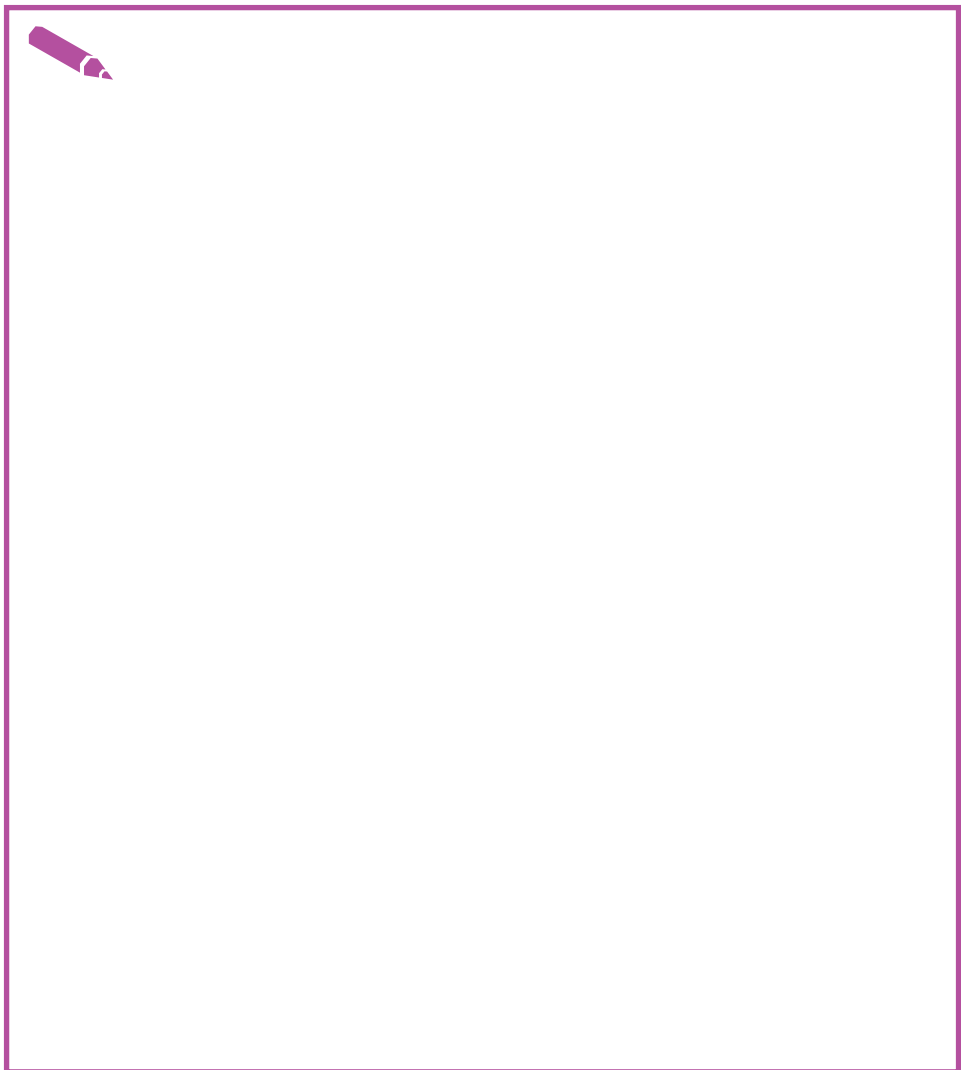


EP. 1

EDISON CHEMICAL METER, 1882

In **episode 1**, we find the Edison Meter, from 1882. Did you know that this invention was of great importance in enabling energy to be sold to our homes? Since it was able to measure the amount of energy we used, there could now be a seller and a buyer of electricity.

Draw your domestic meter and discuss as a family the differences with this one in the exhibition.



EP. 5

THE C METER, 1969

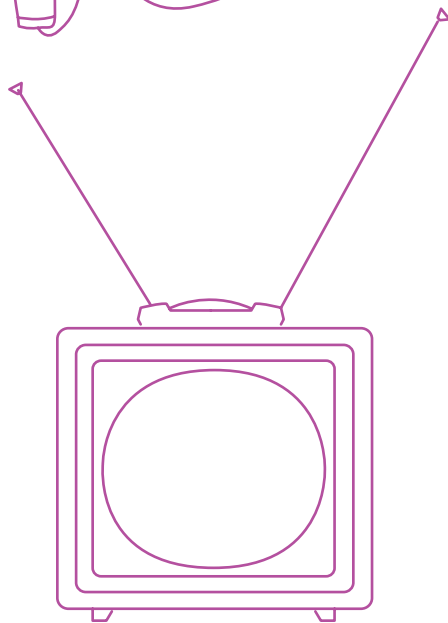
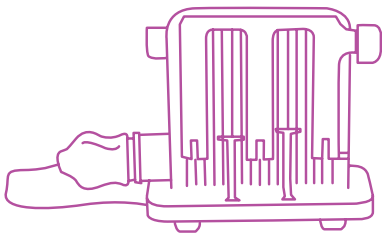
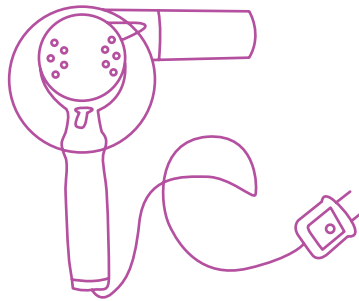
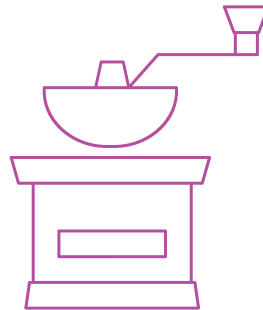
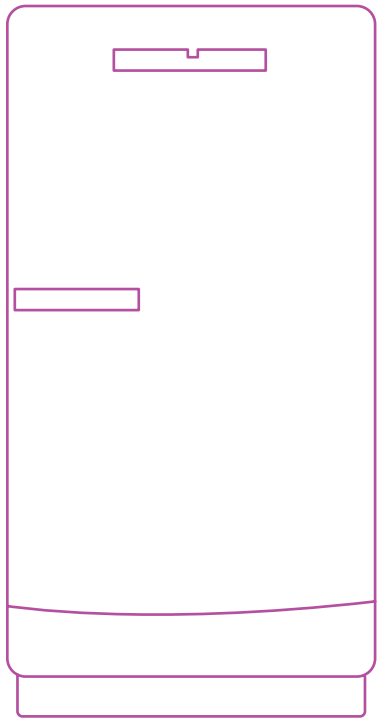
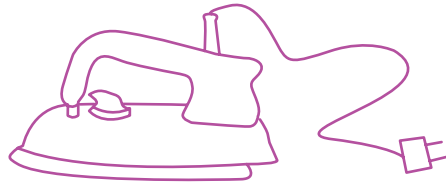
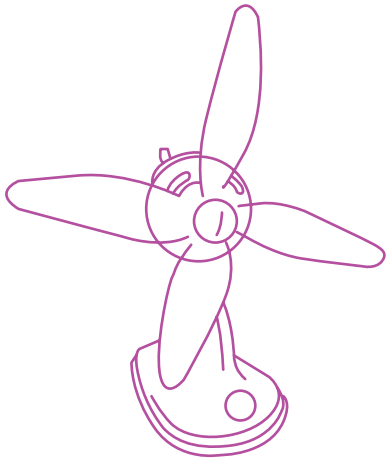
Nowadays, we can no longer imagine life without appliances. We live surrounded by electrical appliances that make our daily activities easier: fridges, vacuum cleaners, microwave ovens, heaters and so on. In **episode 5**, look at the advertisements for new inventions designed to help “housewives”. Is it only women who carry out housework today?

Imagine a new electrical appliance that could help you at home. What could it be? And what slogan could you use to help advertise it?

Design a small poster and a slogan to announce your invention to the world.



Which one of these objects doesn't require electricity?



EP. 8

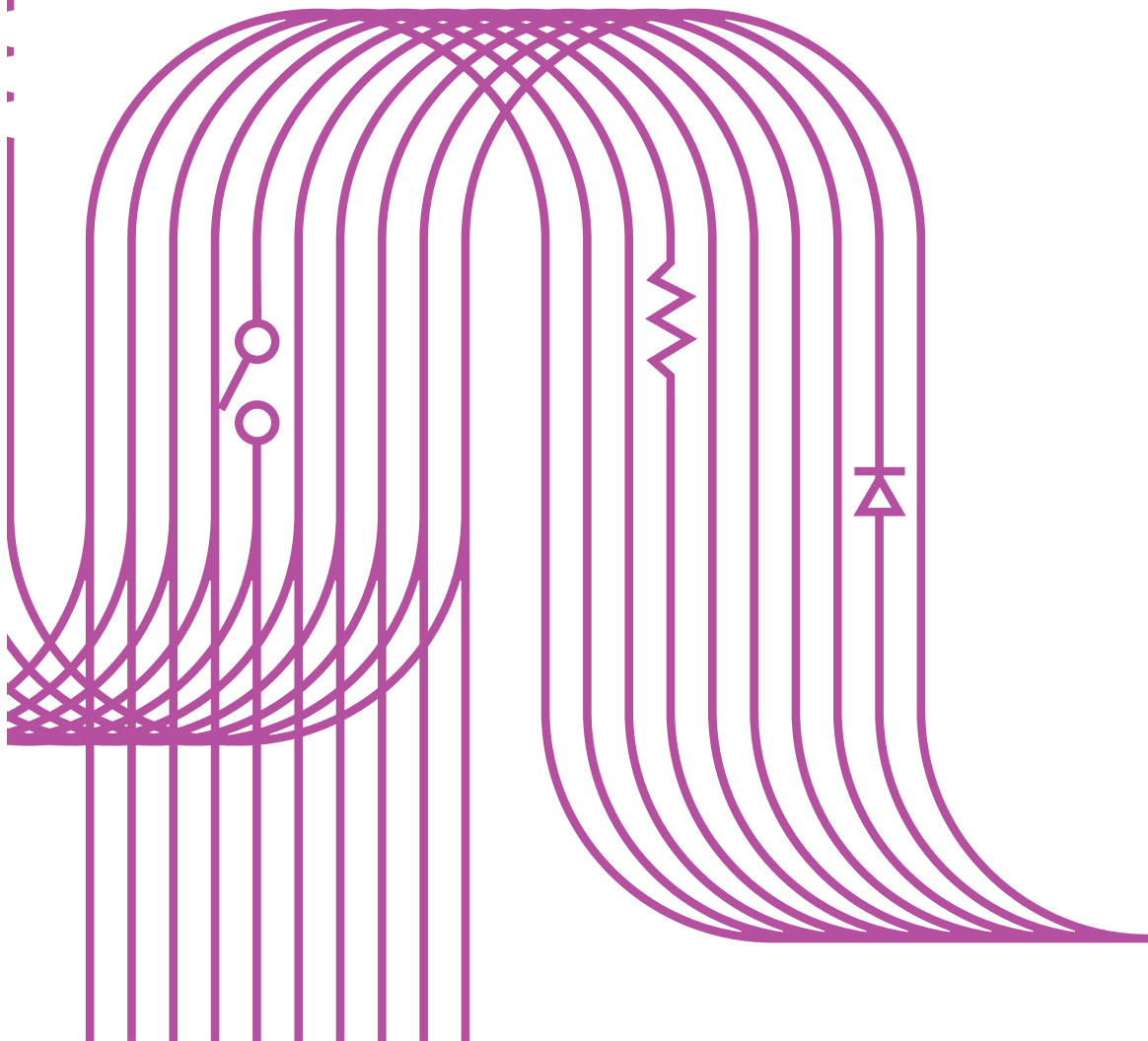
THE MULTI-RATE METER

Presented in **episode 8**, the multi-rate meter allows us to differentiate our energy consumption at different times of the day and thus buy electricity at different prices according to our habits as a family. Between waking up and going to sleep, we always need electricity, but in different ways.

Write down 6 activities you associate with electricity consumption in either the morning or the evening and discuss the differences and similarities as a family.







Discover more activities in
www.maat.pt/en/activities

maat – Museum of Art, Architecture
and Technology
Av. Brasília, Belém
1300-598 Lisbon

Wednesday → Monday
11.00 → 19.00

Summer times
June → September, Friday, Saturday
11.00 → 22.00

+351 210 028 130
+351 210 028 102
General email: maat@edp.pt
Booking: visitar.maat@edp.pt

Follow maat online

www.maat.pt
ext.maat.pt

  
@maatmuseum
#maatmuseum

